



LITTLE CHALFONT PARISH COUNCIL NEWSLETTER OCTOBER 2010

This is the second newsletter from your Parish Council. We are pleased that, as a result of our first newsletter, published in May, a new Councillor (Michael Dear) has been co-opted.

45 local residents attended the Parish Meeting in May to listen to a presentation of the Parish Council's work and plans for the future. Three guest speakers also gave presentations and there was time for a number of questions. Our thanks to those who came along.

Have you thought about being a Parish Councillor?

The next election for Parish Councillors will be held in May 2011.

Not all current Councillors will stand for re-election so new people will be required to fill their places.

If you would like to know more about the duties and responsibilities of being a Councillor, contact the Parish Clerk.

Farmers' Market

The market recently celebrated its 1st anniversary. It is held on the Village Hall car park on the 2nd Saturday of each month from 9.00 a.m. - 1.00 p.m. with normally about 15 stalls. The Market is organised by the Thames Valley Farmers' Market Co-operative. www.tvfm.org.uk



On other pages -

Page 2 - New homes in Bell Lane

Page 2 - Chiltern District Council's Core Strategy

Page 4 - Super Fast Broadband in Little Chalfont?

Page 5 - Christmas events in Little Chalfont

Parish Council's Planning Committee

Planning applications are decided in this area by Chiltern District Council, but the Parish Council has a duty to comment on local applications and is consulted on wider planning policy.

New homes in Bell Lane

In August and early September the Council's Planning Committee made an in-depth analysis of the new, detailed proposals for residential development of the former sawmill site off Bell Lane, which had received outline planning permission in 2008. This is a complex application and the Council is pleased that its objections and recommendations have been recognised by the District Council. As a result, concerns about several matters including security, crime prevention and the height of certain buildings, are to be the subject of further negotiation with the developer.

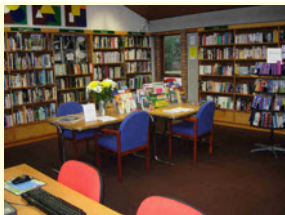
Chiltern District Council Draft Core Strategy

Since June 2009 much effort has been devoted, with partial success, to seeking improvements in the District Council's 'Draft Core Strategy' for meeting government home-building objectives. We would like to thank all those who supported our campaign. The latest position is described in the leaflet circulated with this letter, which encourages residents to write again to the District Council.

In both these projects the Parish Council has worked closely with the Little Chalfont Community Association.

Polling Stations

The Parish Council is aware that many people living in the South Ward of the Parish feel frustrated that they have to travel to Chalfont St. Giles to vote at elections. We have asked Chiltern District Council if this arrangement can be altered. In turn, CDC has asked the Boundary Commission to determine, in time for the May 2011 elections, whether the legislation would allow electors to vote at the Village Hall.



Little Chalfont Community Library

The Parish Council is pleased to support the Community Library.



At the October meeting of the Council, it was agreed that a grant of £6000 should be given to the library for the current year. This is the same amount as the previous year.

The Council would like to thank the trustees and other volunteers for giving up their time to provide a valuable service to local people.

A new Youth Club has opened on Bell Lane!

As you may have heard, the Chalfont Junction Youth Group was formed in January 2010, with the backing of the Parish Council, the Community Association and Bucks CC, together with the support of local businesses. The Group aims to grow to meet the needs of the whole of Little Chalfont but is currently concentrating on the 8 to 13 age group. It is very well equipped and run by the husband and wife team of Simon and Kim Damery. Why not introduce your children by bringing them down one Friday evening and join in yourself!

Additional helpers are required - if you can offer at least some Friday evenings, please contact Simon - 07801 817666

Meeting times: Friday evenings 6.00 p.m. to 8.00 p.m. (during term time)

Venue - Bell Lane Combined School

Focus on the Crocus

Amersham Rotary Club is one of hundreds of Rotary Clubs across Britain and Ireland who are taking part in 'Focus on the Crocus' – a scheme designed to draw attention to Rotary International's effort to eradicate polio from the world. Purple flowering bulbs have been chosen to symbolise the purple dye painted on the little fingers of children when they have been vaccinated. Children from Little Chalfont Primary School agreed to plant bulbs in part of the Village Green. The Parish Council Chairman, Vice-Chairman and Clerk helped in the planting.



It is hoped that the bulbs will flower in a blaze of colour during Rotary Week 2011 at the end of February.



Westwood Park

The Parish Council submitted a bid for £50,000 towards play equipment for 8 - 13 year olds under the 'Playbuilder Fund'. We were delighted to have been awarded one of the two grants available but, within weeks of the announcement, the Government had put the scheme on hold and we are unlikely to receive the money. The Council is still committed to providing better facilities for older children and is trying to find other ways to raise money for this project.

A tennis coaching scheme for children operated in the summer holidays and we hope to do something similar next year.

The MUGA (multipurpose user games area) has been well used since it was opened early this year.

New bins have been ordered to replace damaged ones and an additional dog waste bin will be installed at the far corner, adjacent to the woods and field.

Users of the park will be pleased that the Council is obtaining estimates for repairing the approach drive.

Tree Maintenance

During November, a schedule of tree maintenance work has been organised by the Parish Council. This will take place at the following locations:

Village Hall & Village Green (8 November) Finch Lane (29 November)

Westwood Park (16/17 November),

It will be necessary to close Westwood Park to vehicles on the dates indicated but pedestrian access will still be permitted.

Super Fast Broadband in Little Chalfont?

Would you like BT to supply faster broadband in the Village?

Even if you have no need of this yourself, it is likely that some of your friends would welcome it.

You can help - BT has launched a 'Race to Infinity'. The five areas with the largest percentage of votes by December 31st 2010 will win the chance to bring superfast broadband to their area.

For full details visit <http://www.racetoinfinity.bt.com>

You can then vote for Little Chalfont.

A minimum of 1000 votes are required - this is almost a third of the total number of eligible addresses. Every home and business (not necessarily using BT) has one vote. The winners will be those with the highest number of votes as a percentage of the possible maximum. BT will also give the winners £5000 of computer equipment towards a community project.

Please spread the word - you can check the progress on <http://racetoinfinityandbeyond.veadas.net>

Christmas in Little Chalfont

Saturday December 11th - Christmas Market in the Village Hall
(Organised by the Community Association)
11.00 a.m. - 4.00 p.m.

Farmer's Market 9.00 a.m. - 1.00 p.m.

Saturday December 18th - Carol Service on the Village Green
11.00 a.m. - 12.30 p.m.
With the Amersham Brass Ensemble
(Organised by local Churches)

Free Parking - The Parish Council has arranged with Chiltern District Council that parking in Snells Wood car park will be free of charge on Saturdays December 4th, 11th and 18th.

Next Village Day - Saturday June 11th 2011 (Organised by the Community Association)

After the disappointment of 2010 when there was no Village Day, we are pleased that a volunteer has agreed to organise the 2011 Day. This will be a community affair, going back to the original idea of providing a showcase for local groups etc. Offers of help would be welcome.

Please contact the LCCA Chairman. E-mail - chairman@littlechalfont.org.uk

Hanging Baskets

Much appreciated by local people, the hanging baskets were first installed by the Revitalisation Group. They are funded by donations from local businesses plus donations from other sources including residents. The Parish Council is grateful to the Community Association which is the body now responsible for organising the scheme. The Council has previously donated to the scheme and has now agreed to pay for 15 baskets this year,



Your views are important.

Please let us know what you would like the Council to do (or at least try to do) by:

- Sending comments to the Parish Clerk by letter or e-mail
- Speaking in the short public session at a Parish Council meeting
- Using the message board of the Community Association - www.littlechalfont.org.uk

Your Parish Councillors:

Brian Drew (Chairman) Gary Smith (Vice Chairman)
Christopher Ingham (Chairman Planning Committee)
Lesley Hunt (Vice Chairman Planning Committee)
Martin Dale Peter Martin Michael Dear

One position is currently vacant

Your District Councillors are Don Phillips and Mike Smith
Your County Councillors are Martin Tett and Tim Butcher

Parish Council meetings, held in the Village Hall, are open to the public although occasionally certain confidential items are discussed in private.

Full Council meetings are held on the second Wednesday of each month (except August) at 7.30 p.m.

Planning committee meetings are held every three weeks, usually on Tuesday evenings at 7.30 p.m.

At the beginning of both meetings there is a 10 minute period when members of the public can speak on any relevant subject. In the past, people have spoken in favour of, or in opposition to, planning applications and on subjects such as vandalism, state of the roads etc.

Minutes of all meetings are published on the Council's web site. They are also displayed on the notice boards outside the Village Hall and on Chenies Parade.

Dates of future meetings are on the Council's web site.

Allotments

The Council is committed to provide allotments if possible and discussions are well under way to find suitable space.

Parish Council Office:

This is located at the back of the Village Hall in Cokes Lane.

Please call if you have any queries. The telephone number is 01494 766655.

If unattended, please leave a message on the answerphone and a response will be made as soon as possible.

You can also e-mail - clerk@littlechalfont-pc.gov.uk.

The office is normally open from 9.00 a.m. - 3.00 p.m. Monday – Friday.

The Council's web site is: www.littlechalfont-pc.co.uk

***Published by Little Chalfont Parish Council
Council Office, Village Hall
Cokes Lane Little Chalfont HP8 4UD***