

LITTLE CHALFONT PARISH COUNCIL

Newsletter - Autumn 2014



Our proposed new community centre

Come and see the latest plans!

MAKE A NOTE OF THE DATES Public consultation at the village hall:

Friday 31 October:
2pm - 8pm; presentations at 3pm and 6pm.

Saturday 1 November:
10am - 1pm; presentation at 11.30am.

AS YOU may know, the Parish Council is planning to replace our current village hall with a brand new community centre. With our growing population we are facing an increased demand for better facilities to match the need for suitable venues from various local groups.

It will also provide facilities for a wide variety of events that we cannot currently accommodate in the present building.

Need for new centre

Our village hall was built in 1952 and is becoming increasingly unable to meet demand from local groups for suitable venues, and increasingly costly to maintain.

We did, of course, look at various alternative options, such as refurbishing the current hall, or adding an extension to the existing building.

However, neither option satisfactorily addressed the problem that the cost of maintaining the current hall will become an increasing burden and the building even less able to meet future demands.

The current hall has only one

medium sized hall, and no smaller rooms to allow bookings for meetings and events at similar times. Indeed, we have had to turn down bookings for the hall simply because we don't have enough flexible accommodation to meet

demand. Enabling more events and providing better facilities will benefit not only the groups already using the village hall, but will attract other users.

Furthermore the current village hall has virtually no storage facilities, whereas the new plans incorporate plenty of facilities for groups to store their equipment.

The current Parish Council offices, located out of sight at the rear of the village hall, are cramped and poorly sited. Its current location makes it difficult for local residents to visit the council offices should they wish to raise a local matter in person.



Our current village hall, built 1952, is no longer fit for purpose

Local residents said yes

In September 2012 a public consultation was held, including an exhibition in the village hall.

As a result, over 650 responses were received to the proposals for a new community centre. Of those, 97% supported the new development for our growing village.

The original idea, to combine the new community centre with the library, has proved unviable and therefore the two buildings will remain separate.

It is also planned that additional parking will be made available for both the new community centre and the main Snells Wood car park.

The current public conveniences sited in Snells Wood car park may be demolished as part of the new scheme. They would be replaced with two new wheelchair-accessible public toilets in the new community centre building, located on the outside of the building to enable easy access to all.

Our chosen architect, JBKS, whose offices are in Aston Rowant, has now produced some concept plans for discussion.

You are invited to see these plans for our exciting proposed new community centre and comment on them at the exhibition in the village hall, details above.

Members of the Parish Council will be available to answer your questions at the consultation and to discuss any other ideas you may have.

We are also planning separate consultations for existing groups of users to come along and see for themselves how the new facilities will work. ■

From the Chairman

WELCOME to our newly designed newsletter.

The Parish Council, over the past seven years, has delivered a newsletter to Little Chalfont residents twice each year, to keep you informed of what is happening in the village. Now we have a brand new design, offering more space to keep you even better informed.

I am grateful to Councillor Janet Walford OBE, who has undertaken the work of editing and producing the newsletter. As a recently retired, highly respected financial journalist, her experience and expertise are extremely valuable and I hope you enjoy reading the results of her efforts.

Each of our councillors does more work than just attending council meetings and I am grateful for all the support that they give.

We are also well served by our excellent Parish Clerk, Janet Mason, and by the time you read this, we hope to have a new assistant clerk.

The Parish Council is coming to the end of its second period of office since its formation in 2007. Elections for nine councillors to form the next council will be held in May 2015.

Many local issues affect the quality of our lives in the village, including parking, (see page 3); new housing schemes, (see page 4); and the proposed new waste transfer station (see page 5), to name but a few.

We are a growing community, with almost 3,000 households and about 6,000 residents, so I am delighted that we have now filled the vacancy for a parish councillor; Gillian Roberts, whom many of you may know for her sterling work with the farmers' market, has been co-opted on to the Little Chalfont Parish Council with immediate effect.

This completes our team of councillors, who share a common goal – a desire to help ensure that Little Chalfont remains a place where people want to live and work.

Brian Drew

Little Chalfont Farmers' Market

New stalls add to success

IN THE coming months, just in time for Christmas, new stalls will be added to the Little Chalfont farmers' market.

Gill Roberts, organiser of the farmers' market, said that this was great news, especially as the Little Chalfont farmers' market celebrates its fifth year of operations this year.

The two new stalls to arrive will be Sparkle Sparkle cakes, and another stall selling home made dog biscuits.

The main criterion for the farmers' market is to ensure that quality produce most local to the market is, wherever possible, given preference.

The farmer's market is held every second Saturday of the month, 9am – 1pm in the village hall car park and sells a wide variety of delicious organic products.

And don't forget that there is one hour's free car parking in the Snells Wood car park, adjacent to the market!

The farmers' market helps to attract visitors and trade for the local shops too and, of course, all the money from the products you buy goes straight to the farmers producing the goods.

The produce on sale is all locally sourced, and include artisan breads, cakes, pastries, fruit, vegetables, meat of all kinds, bottled goods like jams and beer, sauces, cheeses, eggs and even a flower stall.

If you are interested in taking a stall



Plenty of fresh produce on sale at the local farmers' market (pictured above)



The farmers' market and craft fair will be held from 9am – 1pm on:

**Saturday 11 October
Saturday 8 November
Saturday 13 December**

info@tvfm.org.uk. Tel: 01235 227266

If you are interested in taking a stall at the **craft fair**, contact the organiser, Carolyn Towner on 01895 677455



Some interesting products on sale at the craft fair, held at the same time as the farmers' market



at the Little Chalfont farmers' market, the contact details are shown above.

At the same time on Saturdays as the farmers' market there is a craft fair in the village hall (pictured above) Why not drop in for a coffee and slice of home made cake, all prepared and served by the Little Chalfont evening Women's Institute.

Many different crafts are on sale in the hall, including hand made soap, wooden decorative items, cards, jewellery and knitwear. With Christmas not too far away the various stalls can offer a good source of interesting presents. ■

Parking review

We need to know what you think!

THANK YOU to the many local residents who took part in a parking survey in 2012 to review parking problems and space in our village.

The Parish Council subsequently held discussions with Transport for Bucks (TfB) on possible improvements to the current parking restrictions in the village. We are pleased to announce that there will now be an informal consultation on the suggestions made in the survey.

These include additional yellow line restrictions in various roads, residents' parking areas and changes to the time allowed for parking in Chenies Parade.

There is a particular problem for residents who live around the station, because of the inconsiderate and dangerous parking by some commuters. Some proposals designed to tackle this problem are yellow line restrictions to the junctions on most roads in the vicinity.

A leaflet explaining the proposed changes accompanies this newsletter. A questionnaire on the proposals will be available to complete online, or you can pick up a copy from the community library, Lina's newsagent or the parish council offices.

We have been able to agree with

TfB most of the proposals. However, there are a few roads where residents have highlighted parking problems, but TfB believes that no additional restrictions are required. These are:

- Amersham Place
- Chenies Avenue
- Chessfield Park
- Clayton Walk
- Pavillion Way
- The Retreat
- Westwood Close
- Westwood Drive

If you live in one of these roads and would like to see more parking restrictions, your voice is important.

Note that this is only one step towards implementation of the proposals. A formal consultation will be required, and we will need to demonstrate public support for any changes; it is therefore vital that large numbers of responses are made to this informal consultation.

So please complete the online questionnaire and let TfB know what you think. Alternatively hard copy questionnaires should be sent to Pete Smyth, BCC, Aylesbury Vale Areas Office, Corrib Industrial Park, Griffin Lane, Aylesbury, HP19 8BP.

The deadline for completed questionnaires is Friday 7 November. ■

In brief

War memorial

Our new war memorial is to be sited on what is known as 'the triangle' close to the village green.

It will be dedicated on Remembrance Sunday, 9 November 2014, at 3pm as part of a remembrance service.

Local uniformed organisations will be parading to the village green and everyone is invited to attend this special event. This will be followed by tea and cake at the village hall.

The Parish Council will underwrite the cost, at a little under £2,000. However, we hope that local people and organisations will make donations to reduce the amount paid by the Council. If you would like to make a donation, please contact the Parish Clerk.

Free parking in Little Chalfont

The scheme to offer one hour's free parking at Snell's Wood car park has been running for a year.

Local residents have embraced the scheme with enthusiasm, as there is a desperate need for additional parking in the shopping area particularly. The scheme will be reviewed shortly and continued, subject to cost.

Small business Saturday 6 December 2014

Last year's inaugural event, arranged by the Little Chalfont Community Association, was such a success that another will be held this year.

Local businesses are putting together a range of special offers and promotions for the day and the Parish Council will provide FREE ALL DAY PARKING at Snell's Wood car park. So make a note of the date and see you there.

Welcome to our new parish councillor

We are delighted to announce that a new parish councillor has joined Little Chalfont Parish Council.

Gillian Roberts, who is the manager of the farmers' market, has been co-opted to the parish council with immediate effect. As well as her work with the market, Gill is a former metropolitan police officer and was secretary of the Bell Lane School PTA some years ago.

Keeping the grass cut

Services may move to parish councils

BUCKS COUNTY COUNCIL (BCC) currently carries out grass cutting, verge maintenance, footpath clearance and other related activities in the village.

Because they are still under tremendous pressure from central government to make further savings, BCC has asked town and parish councils if they would take over many of these responsibilities.

Numerous residents have complained this year about the sporadic grass cutting and the way that this detracts from the appearance of our streets and the village centre.

Over the coming years, BCC will reduce services even more if the work is not transferred to the various parish councils.

Negotiations are underway and on 10 September 2014 Little Chalfont Parish Council voted in favour of taking over the work, subject, of



Little Chalfont village green, after the grass was cut this summer.

course, to acceptable final terms being agreed.

We are committed to improving the appearance of the village, and hope that, by managing the jobs ourselves, a higher standard and a more responsive service will be achieved for our residents. ■

Lights out!

Moving ceremony marks start of WW1

OVER 150 people attended a moving ceremony held at Little Chalfont village green on 4 August 2014, to mark the 100th anniversary of the start of World War I.

The act of reflection was part of the 'Lights out' experience held throughout the UK. The gathering was lit by a semi circle of candles, and lighted torches brought by those attending the ceremony.

Brian Drew, Chairman of Little Chalfont Parish Council, welcomed everyone to the ceremony. Then, gradually, torches were turned off, and representatives of various village organisations extinguished the candles one by one, until at 10pm only one candle was left alight. This represented

the symbolic words of the then British Foreign Secretary Sir Edward Grey, who said, "The lamps are going out all over Europe. We shall not see them lit again in our lifetime."

The Reverend David Allsop opened the proceedings. He was followed by Roger Funk, Chairman of the Little Chalfont Community Association, who read the poem 'For the fallen' by Robert Laurence Binyon, which includes the moving words:

"They shall not grow old, as we that are left grow old/Age shall not weary them, nor the years condemn/At the going down of the sun and in the morning/We will remember them."

Martin Tett, leader of Bucks County



Council, followed with a reading of the poem 'Taking a stand' by John Bailey.

The proceedings were interspersed with soft music. Benjamin Terry was responsible for the lighting and sound for the event.

After the ceremony a local resident commented. "I felt very blessed to have the opportunity to come along tonight and show my respects for those brave men and women who gave their lives so long ago for us." ■

Meeting our housing requirements

Development plans for Little Chalfont

WE LIVE in a growing and vibrant community and it is therefore vital that we plan properly for our future housing needs.

Chiltern District Council (CDC) is legally required to adopt detailed and long term plans for developments to meet housing and other land needs of its residents. To this end, the core strategy for Chiltern District was adopted in November 2011. This sets the vision, overall strategy and key targets such as new housing levels, planned to 2026.

Recently, a separate but supporting document, the delivery development plan document (DDPD), has been developed to set out more detailed policies. These include policies for land use and proposals to deliver the core strategy; it is intended to cover developments up to 2026.

A draft version of the DDPD was issued for consultation in 2013/4 and your Parish Council worked with the Little Chalfont Community Association (LCCA) to prepare a joint response to this consultation.

This response made detailed recommendations on the issues affecting Little Chalfont, including recommendations on:

- Land to be included in the green belt and areas of outstanding natural beauty (AONB).
- Sites with potential for infilling, known as the strategic housing land liability assessment (SHLAA).
- Sites to be designated as 'business sites'.
- Changes to areas designated as established residential areas of special character.

- Identification of sites of special community interest.
- Specific plans to address the various infrastructure issues that Little Chalfont faces. These include the designation of the currently derelict former parking site, immediately between the main Chenies Parade shops and the

Citygate showroom, to be restricted to parking only.

- The designation within the DPDD of parks and open spaces.
- The absence of suitable gypsy / traveller sites.
- Local measures such as Westwood Park, the Nature Park, Snells Wood, the village green and the site containing the proposed community centre / village hall, the community library and the adjacent public car park.
- Heritage sites.
- Retail and shopping development.

The Parish Council and the LCCA are pleased that its joint recommendations have essentially all been incorporated in the proposed DDPD submitted by CDC to the Secretary of State for Communities and Local Government on 15 August 2014.

The public examination is now agreed, sessions to be held on 11 – 14 November 2014, and formal adoption of the DDPD is expected in early 2015.

Once adopted, the DDPD and Core Strategy will form the development plan (or local plan) for the Chiltern district, superseding policies and site allocations in the 1997 Local Plan.

Once adopted the new local plan will cancel the Core Strategy and DDPD and this local plan will be the only CDC plan within the development plan. ■



An illustration of part of the proposed new development for the Donkey Field in Little Chalfont village.

Waste transfer station

BCC to decide on plans

MANY OF you will remember that plans to build a waste transfer station on the site of the London Road Depot (or 'dump' as it is more fondly known) were rejected a couple of years ago.

However, a further planning application has been submitted by the developers for consultation by Buckinghamshire County Council (BCC).

Many residents came along in June to an exhibition by the developers, FCC Environmental, at the village hall and most people were shocked by the proposals.

The waste will be taken by road to Calvert, which is in the north of the County, to fuel a power-from-waste plant. The Parish Council has objected to the proposed development.

The site is in the green belt and an area of outstanding natural beauty. The

dump has been in situ for over 100 years and disturbance to the accumulated contaminants could have a devastating effect on the nearby River Misbourne.

There are also serious implications for the valuable chalk aquifers below the River, and the Chilterns is one of the few places in England where chalk aquifers exist.

Truck movements along the A413 will increase dramatically and all these vehicles will be turning into and out of the site entrance, which is already narrow and can be problematic to negotiate at busy times of the day.

The development will also generate additional noise and odour, which will add to the difficulties for locals.

Although the closing date for public consultation has now passed, no date



A stylised version of what the proposed new Waste Disposal site will look like

had yet been set for the BCC to discuss this latest planning submission at the time we went to press (8 October).

To follow progress log on to the BCC website, which can be found at: www.buckscc.gov.uk/planningapplications.

The planning application number is CM/59/14. ■

Updates from Little Chalfont Community Association

Donkey Field development

AS YOU may know, planning permission has been granted for the construction of new homes on the land behind Chenies Parade shops, generally known as 'the donkey field'.

The Liaison Group, working with the developers Countryside Residential, reports that start on the development may not be too far away, with the site very recently tidied and trimmed.

Over the past few months, the Liaison Group has provided input to many of the pre-conditions with which Countryside must comply before it can start work. Although a few remain to be agreed by Chiltern

District Council Planning, the majority have now been addressed.

The Group believes that its involvement has resulted in improvements that will benefit the outcome of the development and minimise potential issues for the community during the construction period.

As soon as a start date has been decided, it will be posted on the Community Association's website, <http://littlechalfont.org.uk> along with other updated information.

Home to school transport

Proposals by Bucks County Council to set up a joint bus sharing scheme for students at Dr Challoner's High School and Dr Challoner's Grammar School are causing deep concern among residents.

The objective is for students at both schools to be picked up from designated collection points where they live by one bus, instead of two separate buses having to be used. While there may be financial logic in combining the present arrangements, the overall proposal has other implications that need to be factored in and have yet to be fully considered.

Parents and the school heads are naturally concerned about the increase

in the time that it will take their children to reach the schools, along with the new routes and even health and safety issues linked to the use of different buses, including older double decker buses.

However, it is also a community issue for the village as there are potentially further implications that could affect us all. Although full details are awaited, there are likely to be more coaches or buses calling at the schools and potentially causing serious congestion at drop off and collection times.

The Community Association is supporting Dr Challoner's High School in its efforts to get matters resolved, and is actively trying to ensure that, whatever is finally proposed, will be viable for the whole village.

Nature Park

The Action Group members, all local residents and volunteers, continue to work hard on being prepared to implement the plans for the Nature Park and providing support to the efforts to raise the funds required.

The LCCA will supply a full report in its January 2015 newsletter but here are a few recent headlines:

- The Appeal, together with grants, is over 50% towards its initial target of

DATES FOR YOUR DIARY:

Saturday 6 December:

Small Business Saturday

Saturday 13 December:

Carols on the village green

Saturday 6 June 2015:

Village Day

Continued from page 5

£100k, which will enable the Nature Park to open.

- Obtaining a felling licence from the Forestry Commission for the extensive woodland work is nearing completion. The Forestry Commission has also agreed a small grant towards the cost.

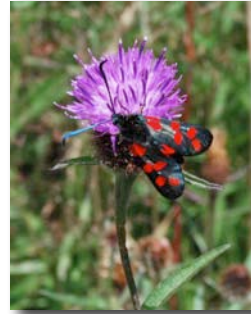
- Grants have been received from Chiltern District Council towards the costs of the proposed benches and signs required.

- Paradigm Foundation has made a substantial grant of £10,000 towards

clearance costs and paths provision.

- Initiatives are underway to involve children at local schools, and Dr Challoner's is organising a competition through the primary schools for design of the Park logo.

Opening the Nature Park next year is a possibility but more donations will be needed for



A burnet moth at the Nature Park, 2014

this to be achieved.

The trustees of the Little Chalfont Charitable Trust once again extend their grateful thanks to all who have donated to the project.

To help decisions on whether or not to support this special project, or to consider further support, escorted tours are now being arranged by the Action Group, keen to share its excitement in what is to be created. For more information, please email

naturepark@littlechalfont.org.uk ■

About Little Chalfont Parish Council

Parish councillors



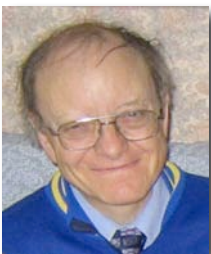
Brian Drew,
Chairman



John Hinkly,
Vice Chairman



Michael Parker,
Planning Committee
Chairman



David Rafferty
Planning Committee
Vice Chairman



Vinny Patel



Janet Walford OBE



James Wyper



Gill Roberts

Parish Council meetings

Parish Council general meetings are held on the second Wednesday of each month, except for August.

The meetings are held at Little Chalfont Village Hall, Cokes Lane, Little Chalfont, HP8 4UD, commencing at 7.30 pm. The meetings are always open to the public, so why not come along to a meeting and see your Parish Council in action?

A number of people have recently taken advantage of the opportunity allowed at all meetings for public comments, to express their views and to ask the Council for support in relation to various matters.

The next meeting of the Parish Council will be held on Wednesday 2 November 2014.

Planning Committee meetings are usually held every third Tuesday. At these meetings you can hear discussions of planning applications submitted for Little Chalfont, and whether the Parish Council agrees that the planning application should go ahead.

The next meeting of the planning committee will be on held on Tuesday 21 October 2014.

Parish Council office

The Parish Council office is located at the rear of the Village Hall in Cokes Lane. Contact details for enquiries:

TELEPHONE: 01494 766655. If unattended, you may leave a message on the answerphone and we will respond as soon as possible.

EMAIL: clerk@littlechalfont-pc.gov.uk

OFFICE OPENING HOURS: 9am – 3pm, Mon – Fri.

COUNCIL WEBSITE: www.littlechalfont-pc.gov.uk



Janet Mason
Parish Clerk

Any comments or suggestions?

If you have any comments or suggestions to make about this newsletter or its contents, please contact the Parish Clerk on clerk@littlechalfont-pc.gov.uk. We welcome your feedback!

Newsletter distribution

The Parish Council is indebted to Adrian Lockyer, membership secretary of the Community Association, for organising the distribution of the newsletters and to the volunteers who deliver them, ensuring all homes and businesses in Little Chalfont receive a copy.